

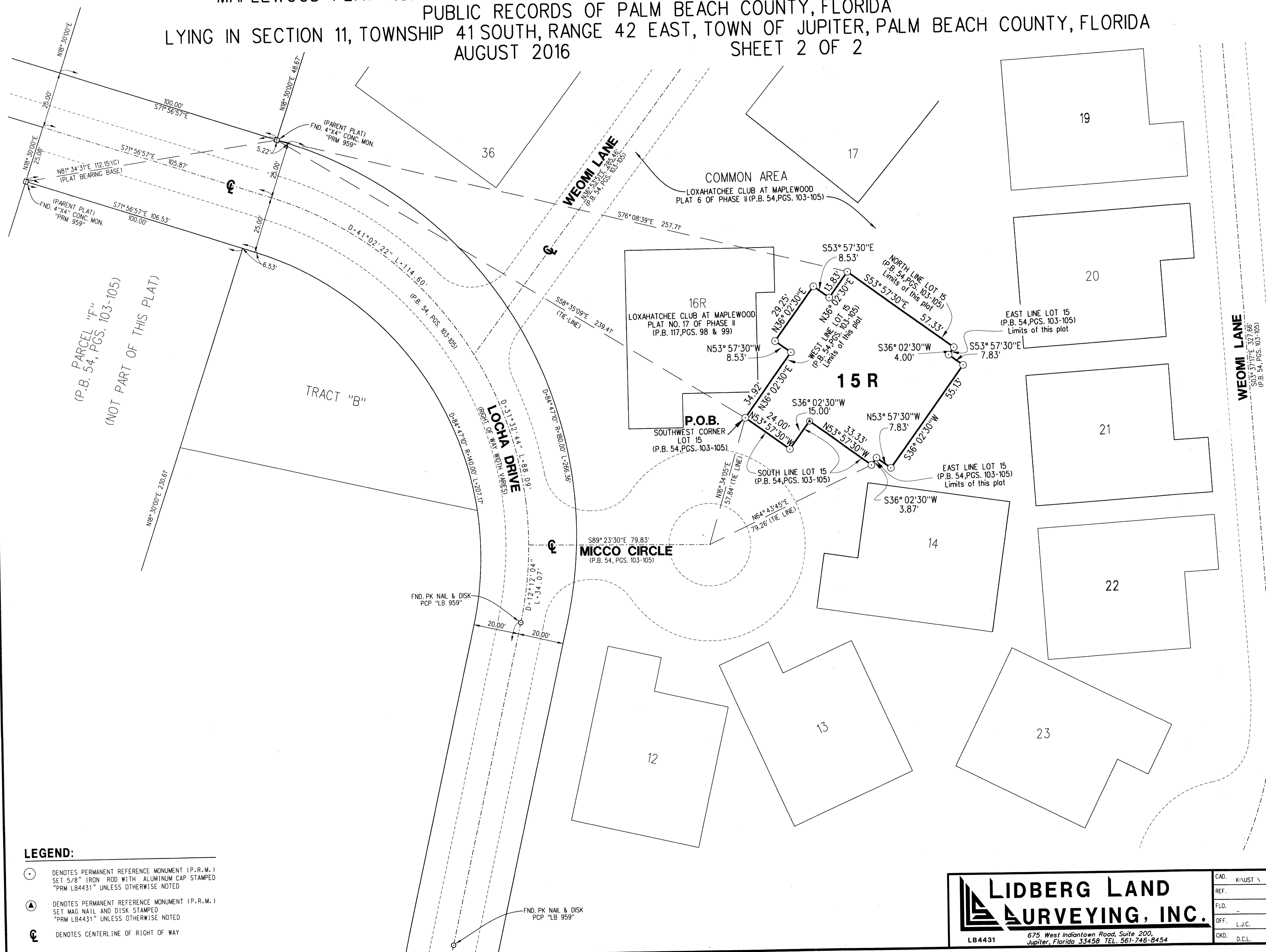
LOXAHATCHEE CLUB AT MAPLEWOOD PLAT NO. 21 OF PHASE II

BEING A REPLAT OF LOT 15, AND A PORTION OF THE COMMON AREA, AS SHOWN ON THE PLAT OF THE LOXAHATCHEE CLUB AT MAPLEWOOD PLAT NO. 6 OF PHASE II, AS RECORDED IN PLAT BOOK 54, PAGES 103 THROUGH 105,

PUBLIC RECORDS OF PALM BEACH COUNTY, FLORIDA

LYING IN SECTION 11, TOWNSHIP 41 SOUTH, RANGE 42 EAST, TOWN OF JUPITER, PALM BEACH COUNTY, FLORIDA
AUGUST 2016
SHEET 2 OF 2

80



PARCEL "F"
(P.B. 54, PGS. 103-105)
(NOT PART OF THIS PLAT)

TRACT "B"

WEOMI LANE
(P.B. 54, PGS. 103-105)

WEOMI LANE
(P.B. 54, PGS. 103-105)

MICCO CIRCLE
(P.B. 54, PGS. 103-105)

16R
LOXAHATCHEE CLUB AT MAPLEWOOD
PLAT NO. 17 OF PHASE II
(P.B. 117, PGS. 98 & 99)

15R

19

20

21

22

12

13

14

23

COMMON AREA
LOXAHATCHEE CLUB AT MAPLEWOOD
PLAT 6 OF PHASE II (P.B. 54, PGS. 103-105)

19

20

21

22

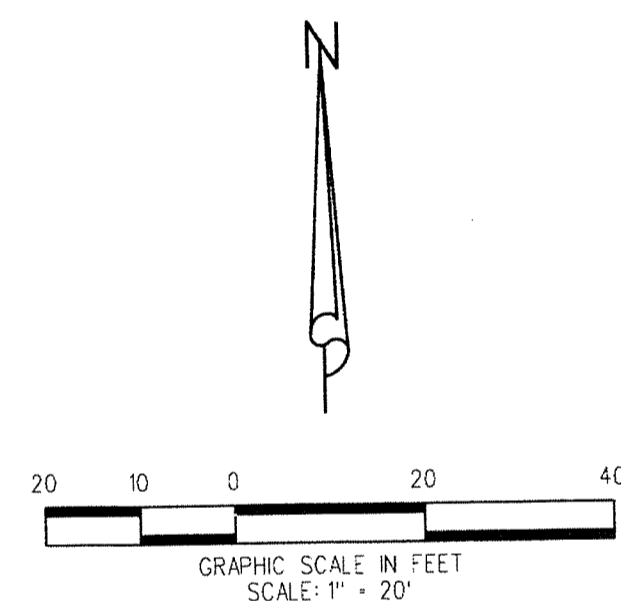
12

13

14

23

- LEGEND:**
- DENOTES PERMANENT REFERENCE MONUMENT (P.R.M.) SET 5/8" IRON ROD WITH ALUMINUM CAP STAMPED "PRM LB4431" UNLESS OTHERWISE NOTED
 - ⊙ DENOTES PERMANENT REFERENCE MONUMENT (P.R.M.) SET MAG NAIL AND DISK STAMPED "PRM LB4431" UNLESS OTHERWISE NOTED
 - ⊕ DENOTES CENTERLINE OF RIGHT OF WAY



- ABBREVIATIONS:**
- CB = CHORD BEARING
 - CL = CHORD LENGTH
 - D = DELTA
 - D.E. = DRAINAGE EASEMENT
 - L = ARC LENGTH
 - O.R.B. = OFFICIAL RECORD BOOK
 - N.E. = NORTHEAST
 - N.W. = NORTHWEST
 - P.C.P. = PERMANENT CONTROL POINT
 - P.B. = PLAT BOOK
 - PG. = PAGE
 - P.O.B. = POINT OF BEGINNING
 - P.O.C. = POINT OF COMMENCEMENT
 - P.R.M. = PERMANENT REFERENCE MONUMENT
 - P.S.M. = PROFESSIONAL SURVEYOR AND MAPPER
 - R = RADIUS
 - S.E. = SOUTHEAST
 - S.W. = SOUTHWEST
 - U.E. = UTILITY EASEMENT

LIDBERG LAND SURVEYING, INC.

675 West Indiantown Road, Suite 200, Jupiter, Florida 33458 TEL. 561-746-8454

CAD. K:\JUST \ 11412 \ 54-103 \ 15-037-306 \ 15-037-306.DGN	
REF.	
FLD.	FB. PG. JOB 15-037-306
OFF. L.J.C.	DATE AUGUST 2016
GKD. D.C.L.	SHEET 2 OF 2 DWG. D15-037P